

TIPS

- For best results, use less glue as possible and spread it with a toothpick.



- Use a straw to assist the small parts assembly.



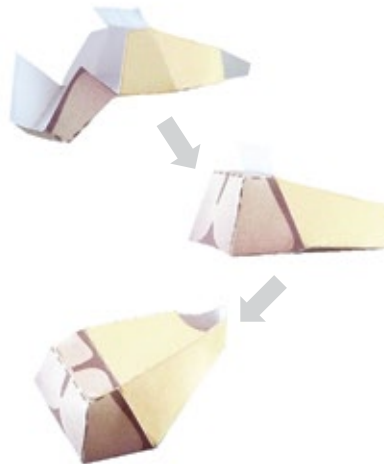
- To facilitate assembly, bend the paper **before** gluing the pieces.



- Start by assembling the hip (part # 1), the right leg (2a) and the left (3a).



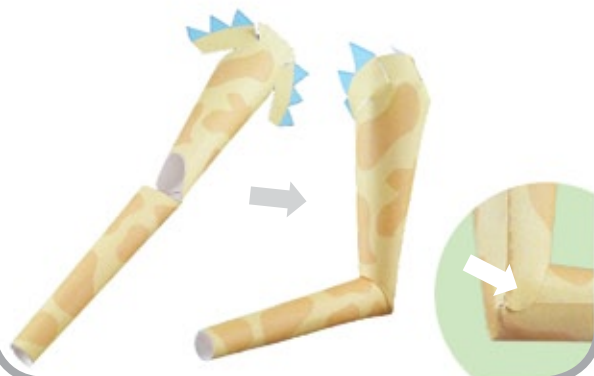
- Assemble the right foot (2b) and the left foot (3b).



- Join the hips, legs and feet. Remember to align seams.



- Assemble the left arm (6a). To fix the elbow, put some glue inside the side flap.



- Assemble the right arm (7a) in the same way.



- Assemble the left hand (6b) and the right (7b), curling and gluing the wrist strip.



- Assemble the trunk (5).



- Join all the pieces. The wrist is wider than the forearm, so it must be glued by the inner side.



- Assemble the bottom neck (8a).



- Assemble the neck and head (8b), aligning the picture in the seams.



- Assemble the other part of head (8c). Join it to the neck, spreading a little bit of glue in the inner of side flap.



- Assemble the mouth (8d).



- Join all the modules.



- Glue the tail (4a) on the back of the coloured rectangle (4b), cut and fold it. Stick it on the giraffe rear.



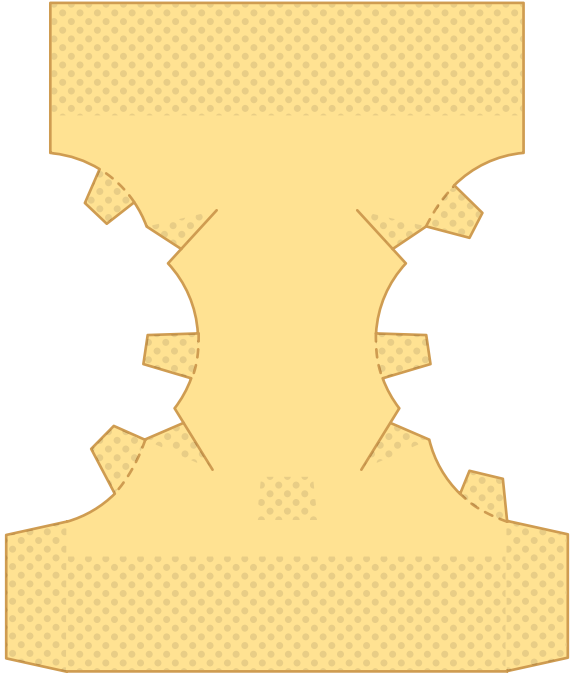
- Assemble the base (9), glue the giraffe on it and READY!



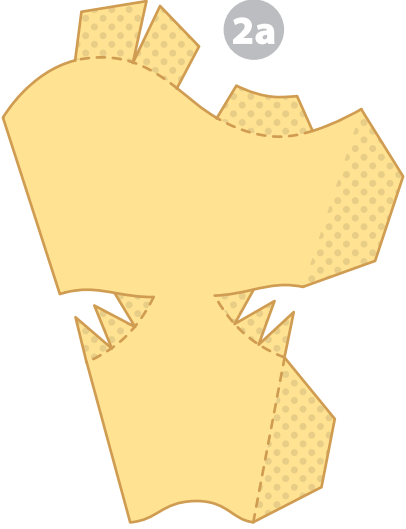
Symbols

- Cut
- - - - - Fold
- Glue

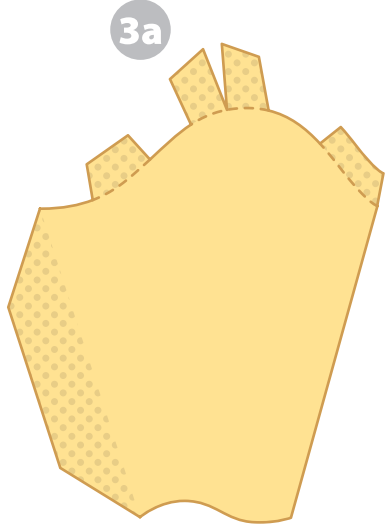
1



2a



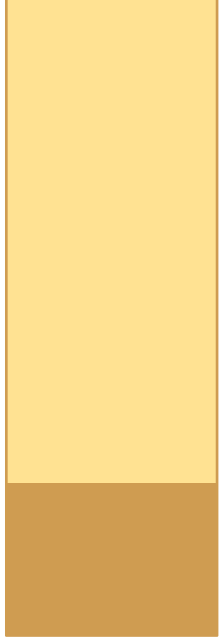
3a



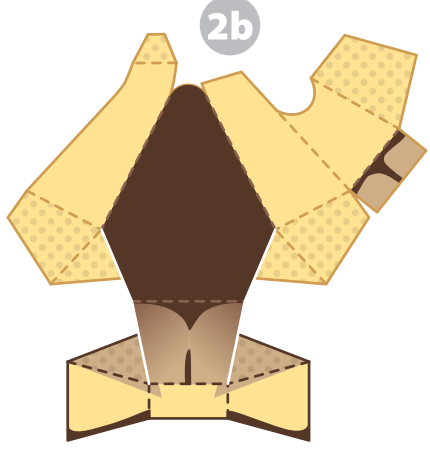
4a



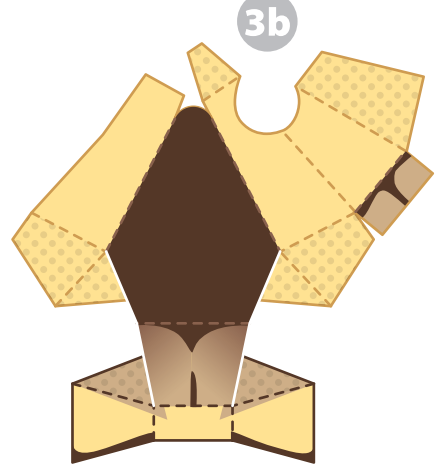
4b



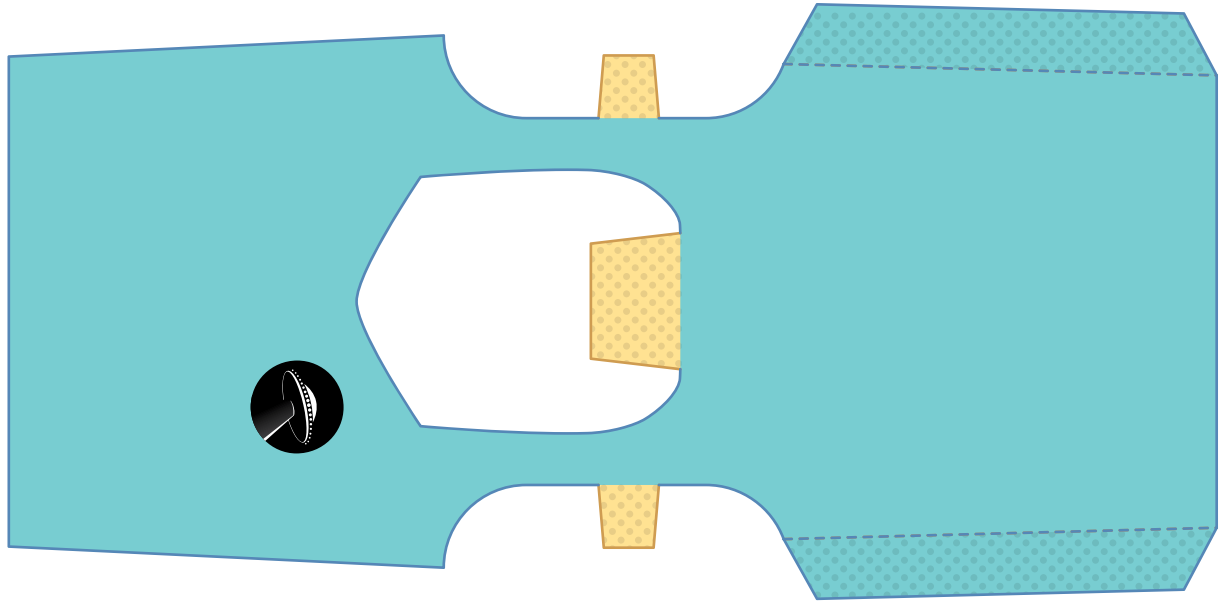
2b

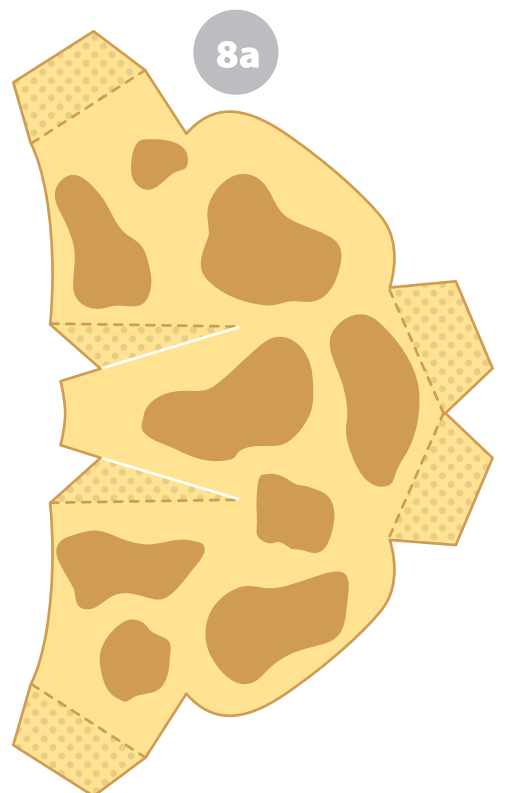
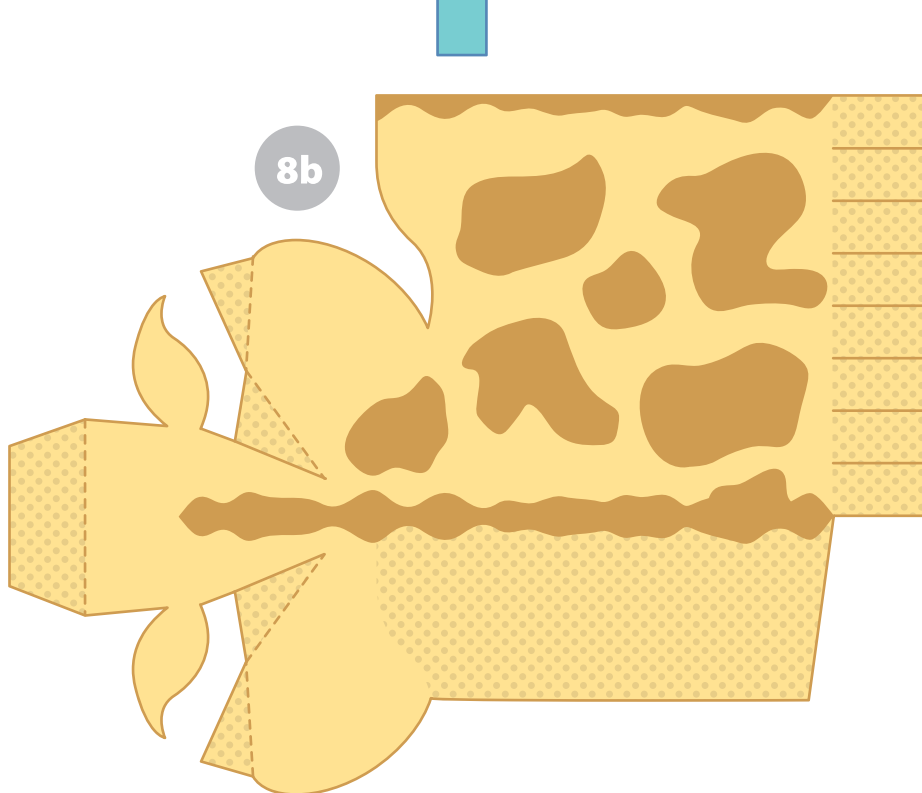
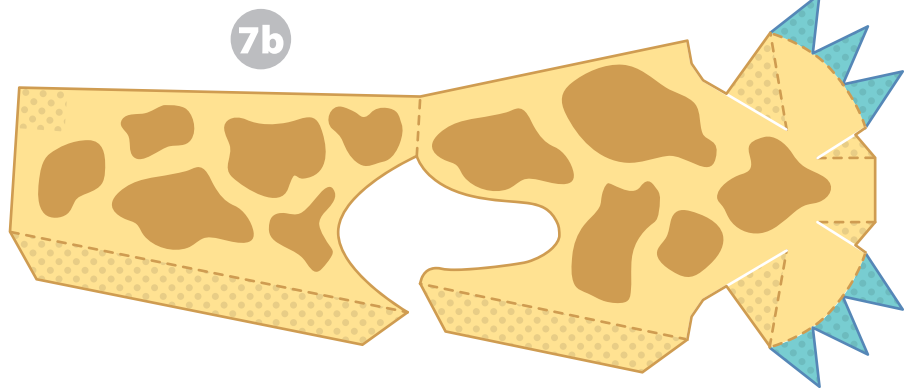
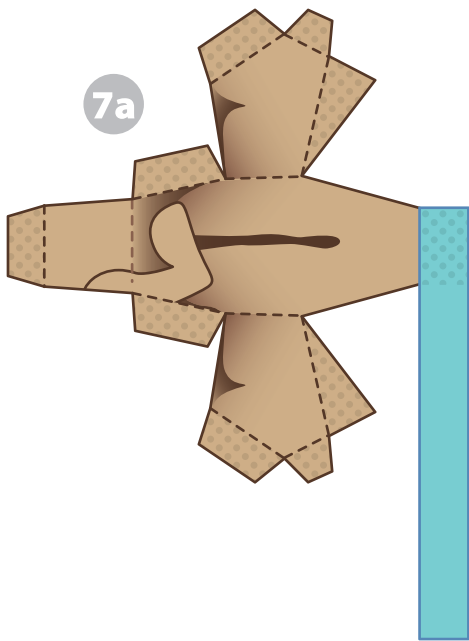
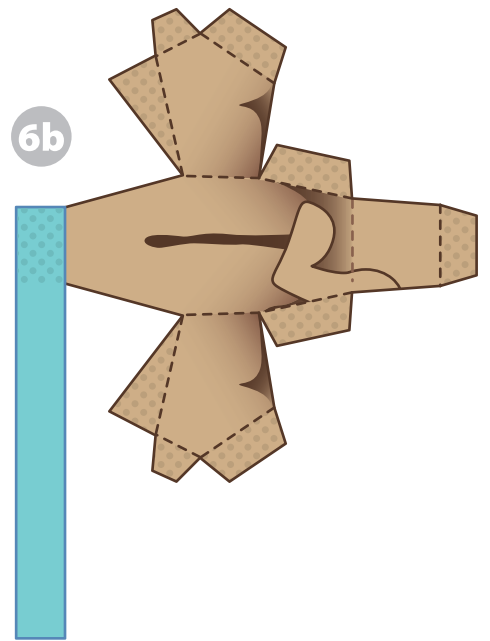
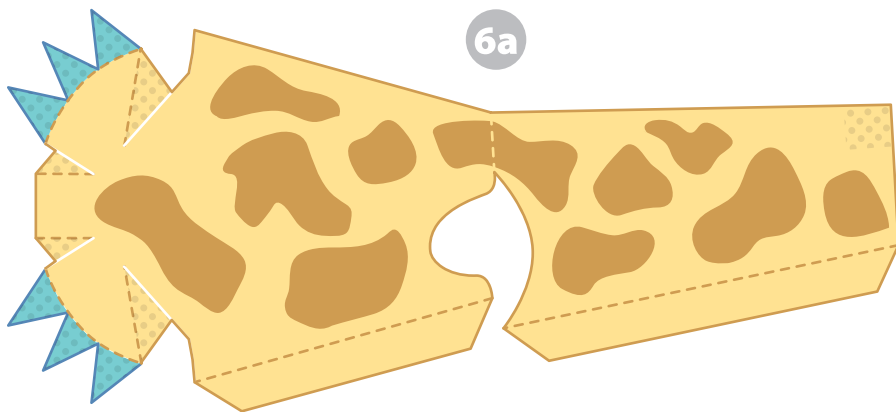


3b

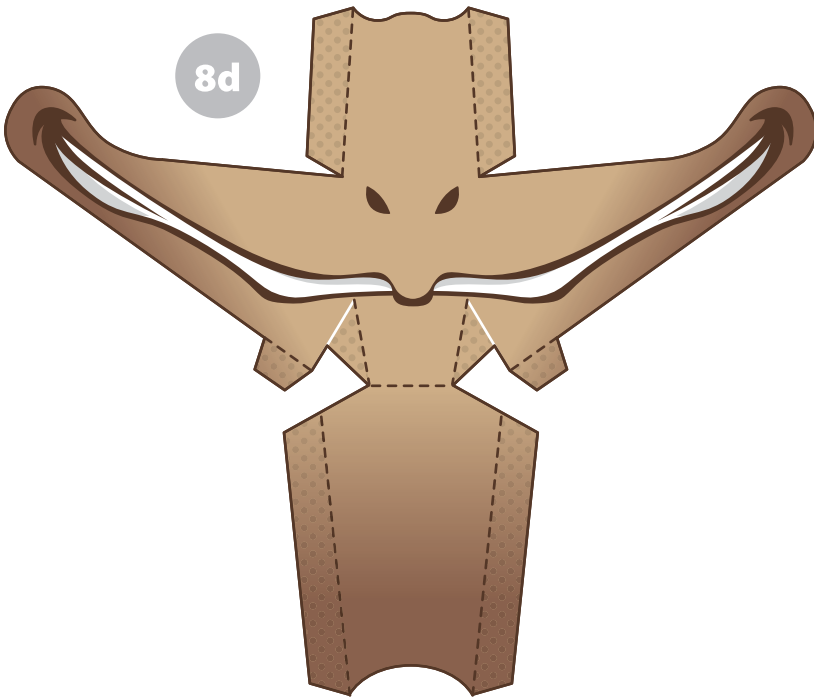


5

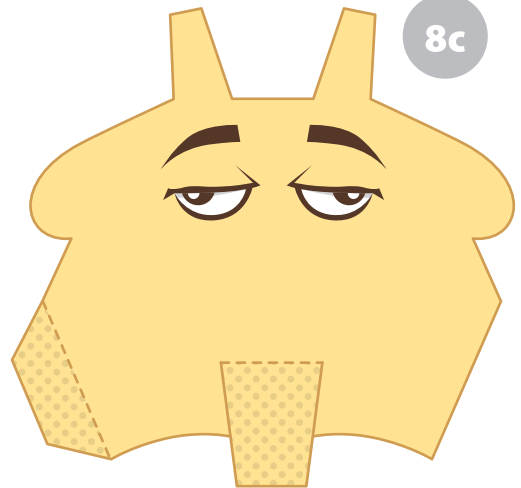




8d



8c



9

